

WilsonStone

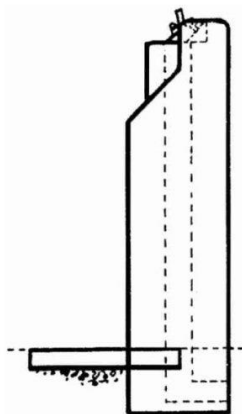
DRINKING FOUNTAINS & BRAAIS

The Clifton Drinking Fountain



Polished concrete Drain Side - Height: 1175mm
Polished concrete Drain Side - Width: 200mm
Smooth Concrete Side - Width: 400mm
Finish: Polished concrete & smooth grey

The Drinking Fountain

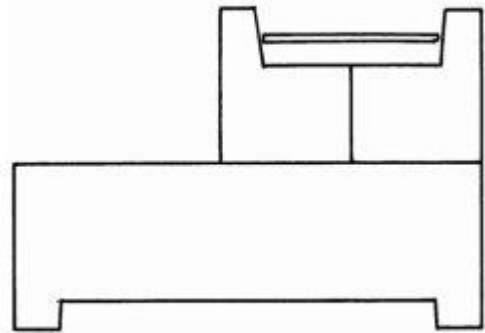


Height overall: 1200mm
Height above ground: 900mm
Diameter: 300mm
Finish: Exposed aggregate

WilsonStone

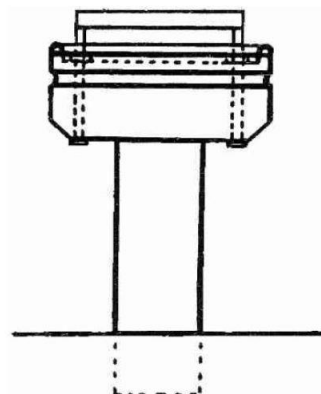
DRINKING FOUNTAINS & BRAAIS

Hermanus Braai



Overall Height:	570mm
Size:	360mm x 360mm
Length OH:	1000mm
Width OH:	500mm
Finish:	Exposed Aggregate

Exposed Aggregate Braai



Overall Height:	950mm
Height above ground:	900mm
Diameter:	500mm
Finish:	Exposed Aggregate